

London Devilettes Girls Hockey Association Policy on Registration of Competitive Division Players

The LDGHA is an all-volunteer organization with the objective of promoting girls hockey in the London area. The LDGHA stresses the importance of good sportsmanship and good citizenship among its members. The LDGHA operates house league and competitive divisions and is committed to providing high quality programs for players of all ages and levels of hockey ability.

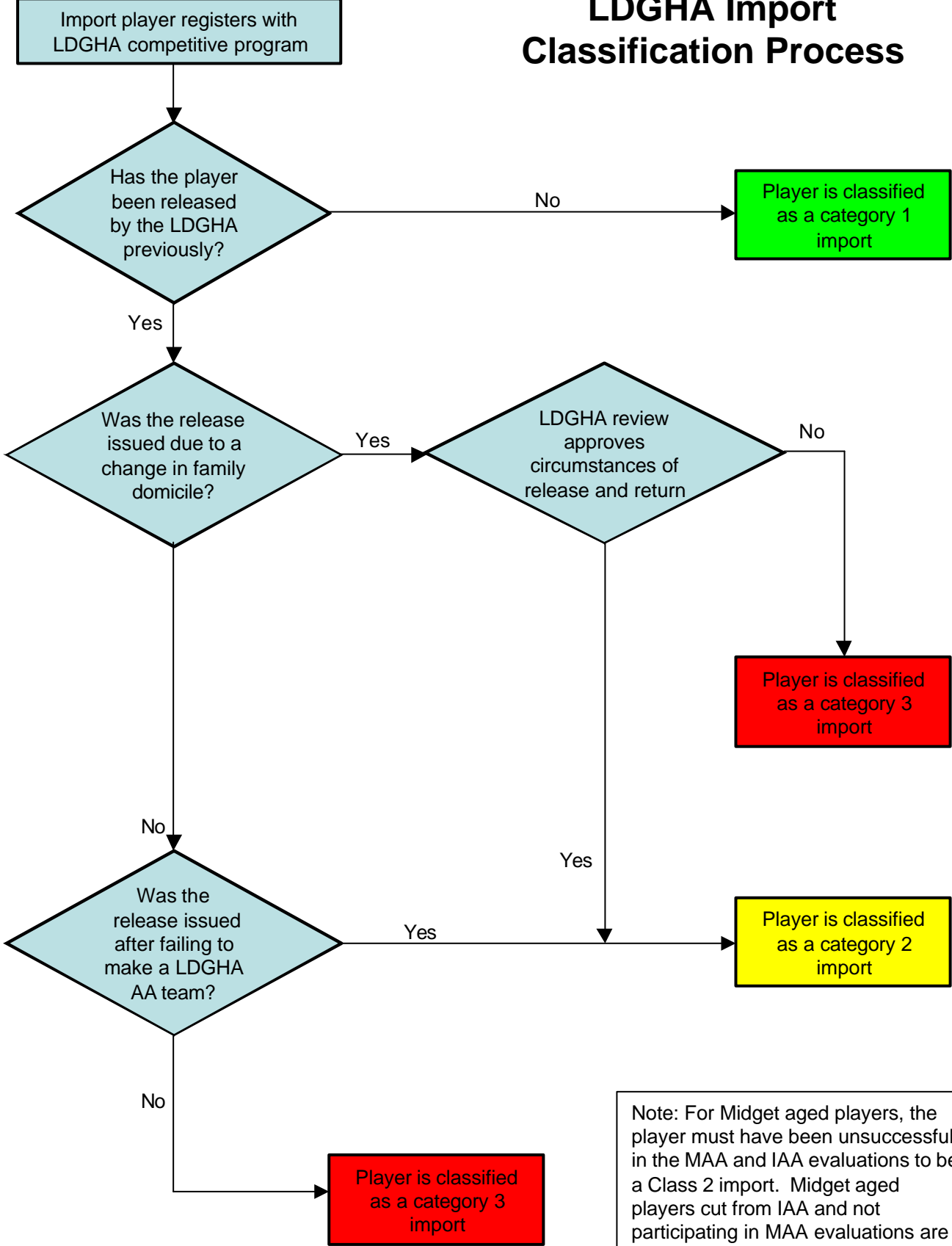
The LDGHA welcomes players from London and the surrounding area that are capable of playing hockey within the competitive division of the LDGHA. The LDGHA encourages players to remain members of the association throughout their competitive hockey careers. Current existing policies allow players to leave the LDGHA if they wish. This policy details the conditions should a player desire to return to the LDGHA.

When a player registers with the LDGHA to attend evaluations for competitive teams, the player will normally be allowed to try out for any competitive team at her age level, as long as she meets OWHA rules and LDGHA registration requirements. For the purposes of this policy, any player who **did not play with the LDGHA in the previous season** will be classified as an Import Player. Import players are welcome to attend evaluations for LDGHA teams, subject to satisfying OWHA rules and LDGHA registration policies.

Import Players will have their eligibility determined by the stipulations below:

- Any import player registering with the LDGHA for the first time will be eligible to attend evaluations for all teams at her age level. (Category 1 Import)
- Any import player who, in any previous year, participated fully but was unsuccessful in evaluations for all AA teams offered at her age level who then requested a release and subsequently returns to the LDGHA will be eligible to attend evaluations for all teams at her age level (Category 2 Import)
- Any import player who, in any previous year, requested a release from the LDGHA
 - before fully completing evaluations for all LDGHA AA level teams offered at her age level or
 - after being selected to any LDGHA AA team at her age leveland subsequently returns to the LDGHA will not be eligible to attend evaluations for the top LDGHA AA level team at her age level in the year of her return. Participation in evaluations for second level competitive teams will be allowed. (Category 3 Import)
- For Midget aged players seeking to return to the LDGHA and classified as Category 3 Imports, this restriction will apply to evaluations for the Intermediate AA team only. Returning Midget aged players will be allowed to participate in evaluations for the LDGHA Midget AA team in the year of their return.
- The returning status of any Import player whose release from the LDGHA and/or return to same was due to a change in family domicile will be evaluated by the Board on a case-by-case basis.
- This policy will apply to all players who were released by the LDGHA on or after April 12, 2006.

LDGHA Import Classification Process



Note: For Midget aged players, the player must have been unsuccessful in the MAA and IAA evaluations to be a Class 2 import. Midget aged players cut from IAA and not participating in MAA evaluations are Category 3 imports.